

**Family Day
Know Before
You Go
Guide**

**BorderLight Theatre
Festival**

Entering from Euclid
and taking the elevator
to Miller Classroom

I am going to BorderLight's Family Day on Saturday July 27 at Idea Center. The address is 1375 Euclid Ave, Cleveland, OH 44115.



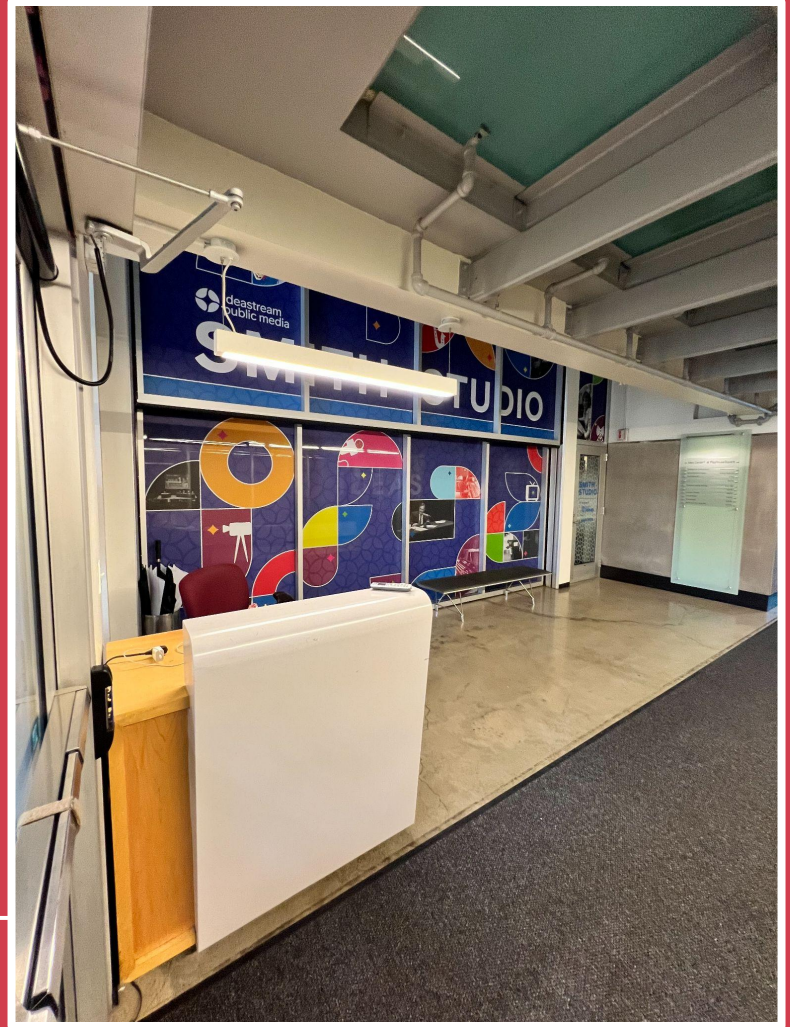
I will walk through the double doors when I enter from the Euclid entrance.



When I look straight ahead, I will walk through the glass double doors.



When I walk in through the double glass doors, I will see a security desk on the left side.



When I walk through the double doors, I will see two colorful elevators.



I will walk to the left of the colorful elevators and see a hallway with double doors.



I will walk past the double doors and through a hallway.



After I walk through the hallway,
I will look to the left. I will see a
table where Family Day box
office will be located. I will check
in here.



If I look to the right of the Family Day box office, I will see an elevator.



I will go inside the elevator and push the LL button to go downstairs for Family Day activities.



When I arrive to the the lower level floor, I will exit a yellow/green elevator.



When I get out of the elevator, I will go to the right and see Miller Classroom's double doors.



When I walk through the double doors, I will be inside Miller Classroom.



On the right side of the classroom, I will see double doors leading me to a hallway.



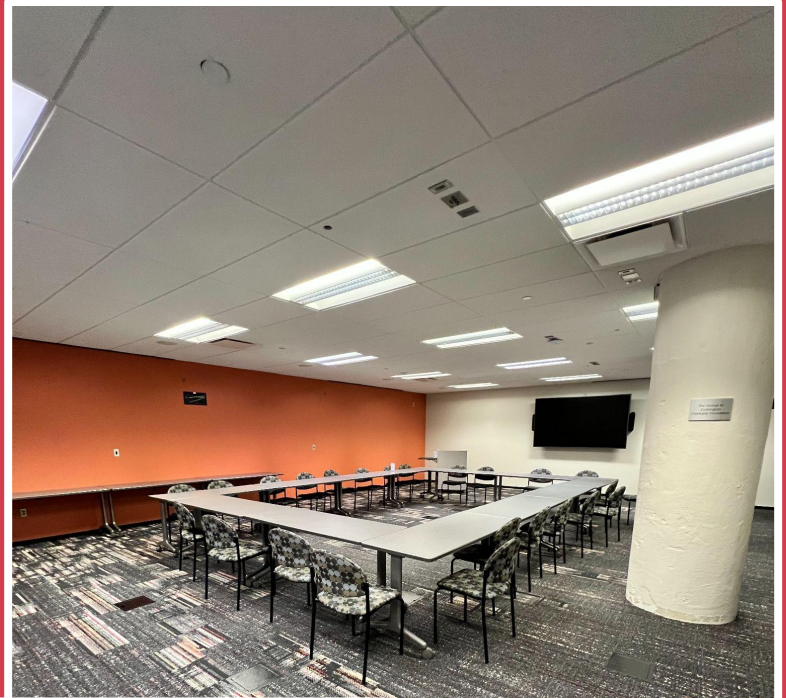
When I walk through the doors, I will see a hallway.



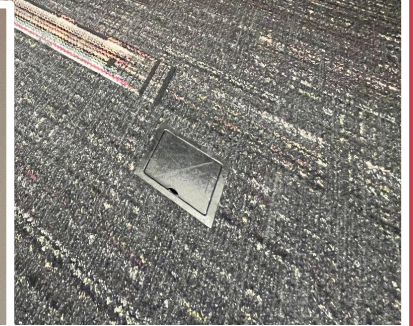
If I need a quiet space, I will go to the white double doors on the left side of the hallway.



When I walk through the doors, I am now inside the Brown Room, which is known as the Quiet Space.



Jeanette Grasselli Brown
& Glenn R. Brown
Teaching Lab



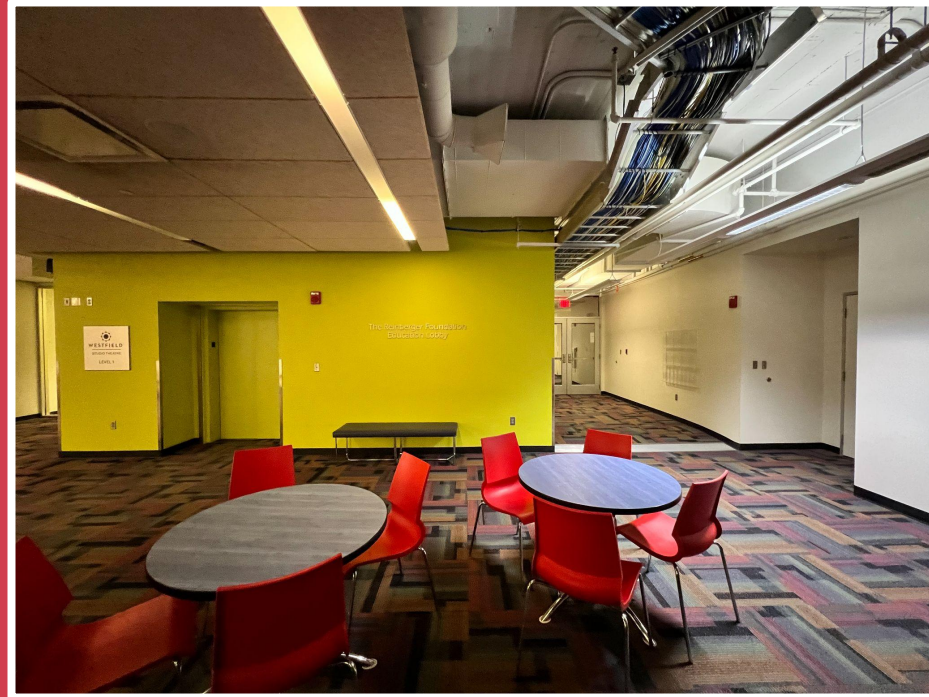
When I leave the Quiet Space, I will see a hallway with pair of glass double doors at the end.



When I walk to the end of the hallway, I will go out the doors.



When I walk through the doors, I will end up in the large room called PB & J Room where I started.



If I have to use the bathroom, I will go to the hallway off of the PB & J Room.



If I get hungry, I can go to the Deli
that is located right off of the
restrooms.



When I go inside the Deli, I will see vending machines, a small kitchen, and tables.

