

**Family Day  
Know Before  
You Go  
Guide**

**BorderLight Theatre  
Festival**

Entering from Euclid  
and taking the stairs  
to Miller Classroom

I am going to BorderLight's Family Day on Saturday July 27 at Idea Center. The address is 1375 Euclid Ave, Cleveland, OH 44115.



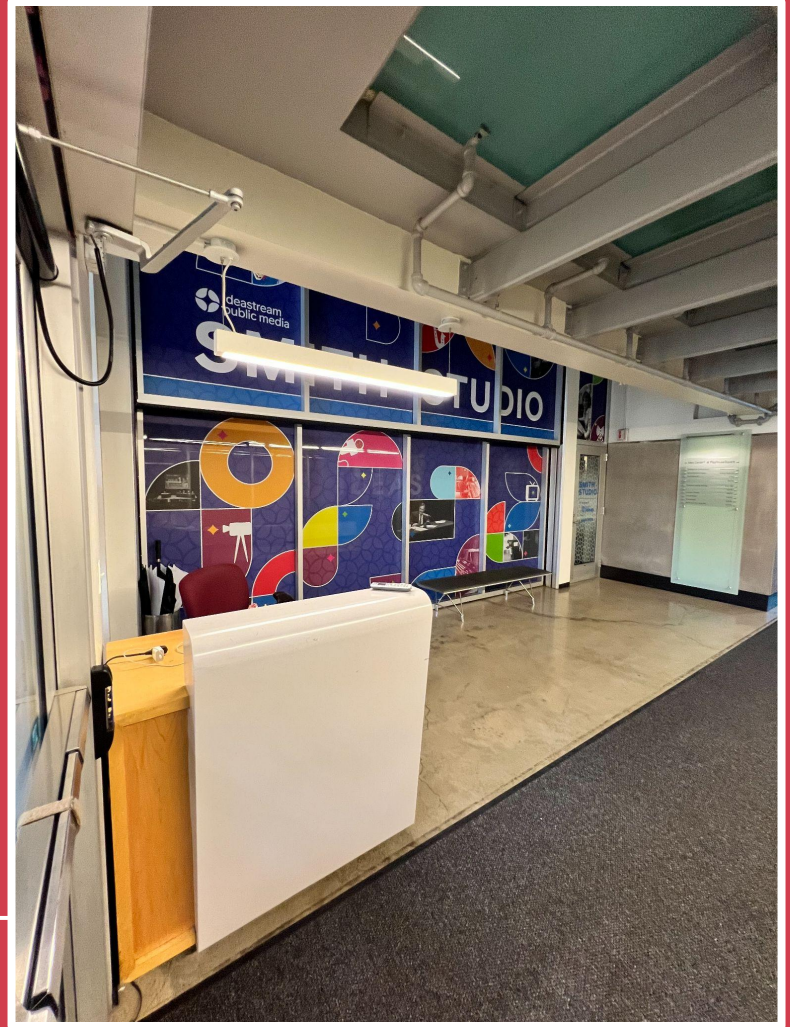
I will walk through the double doors when I enter from the Euclid entrance.



When I look straight ahead, I will walk through the glass double doors.



When I walk in through the double glass doors, I will see a security desk on the left side.



When I walk through the double doors, I will see two colorful elevators.



I will walk to the left of the colorful elevators and see a hallway with double doors.





I will walk past the double doors and through a hallway.



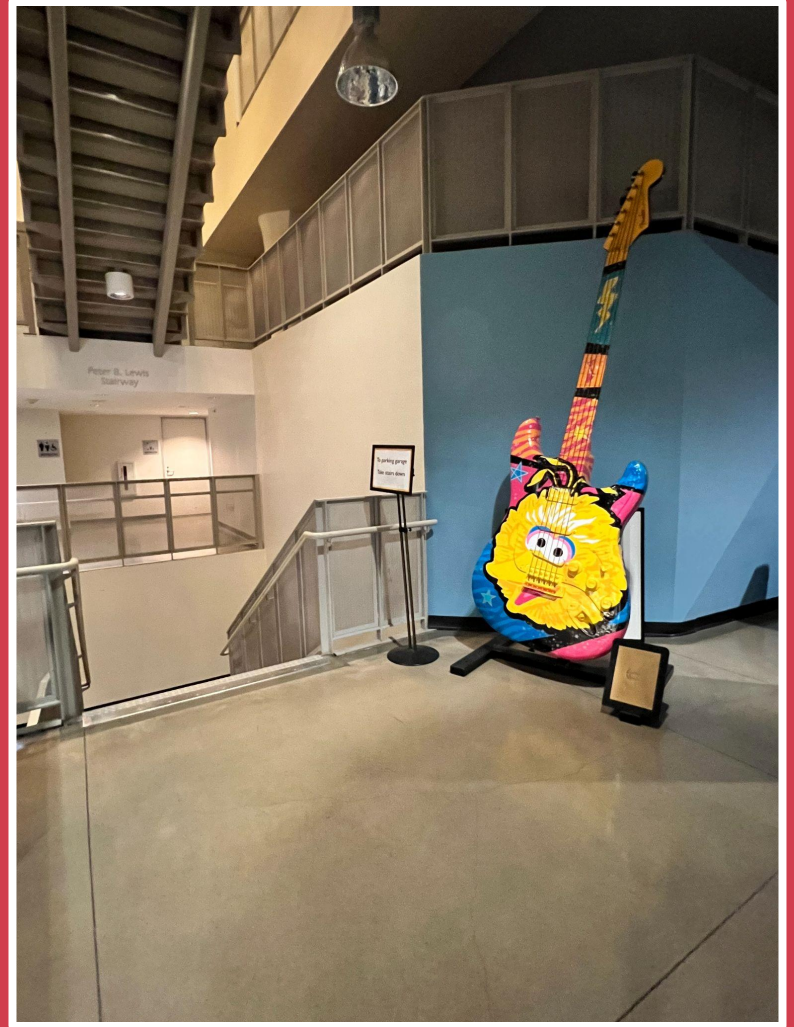
After I walk through the hallway,  
I will look to the left. I will see a  
table where Family Day box  
office will be located. I will check  
in here.



Straight ahead of Family Day box office, I will see a large staircase with a colorful pole.



I will walk past the colorful pole and see a big guitar with Big Bird on it. Then, I will walk down the stairs to Family Day activities.



I will continue to walk down the staircase until there are no more stairs.



After I am down the staircase, I will see Miller Classroom's double doors straight ahead.



When I walk through the double doors, I will be inside Miller Classroom.



On the right side of the classroom, I will see double doors leading me to a hallway.





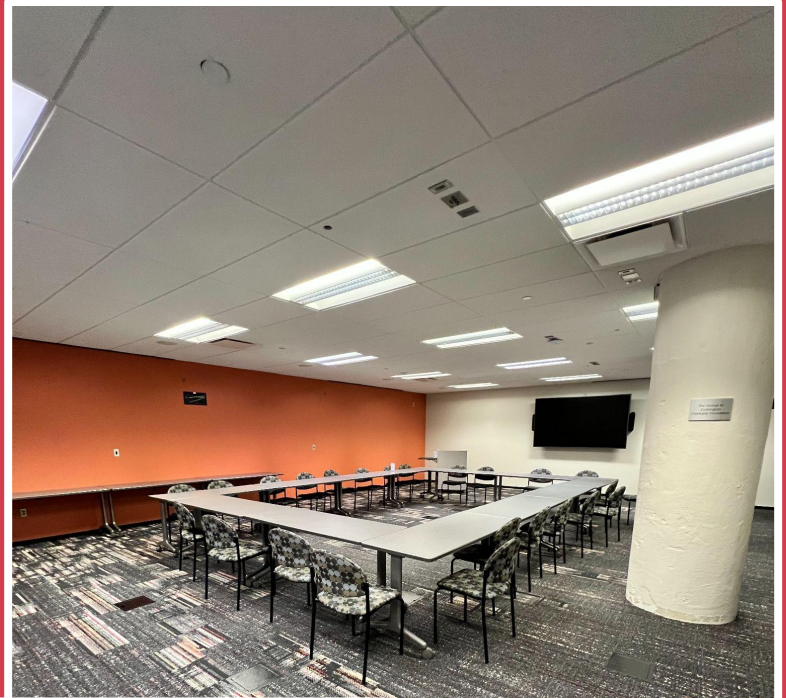
When I walk through the doors, I will see a hallway.



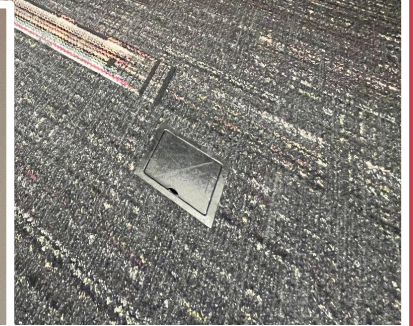
If I need a quiet space, I will go to the white double doors on the left side of the hallway.



When I walk through the doors, I am now inside the Brown Room, which is known as the Quiet Space.



Jeanette Grasselli Brown  
& Glenn R. Brown  
Teaching Lab



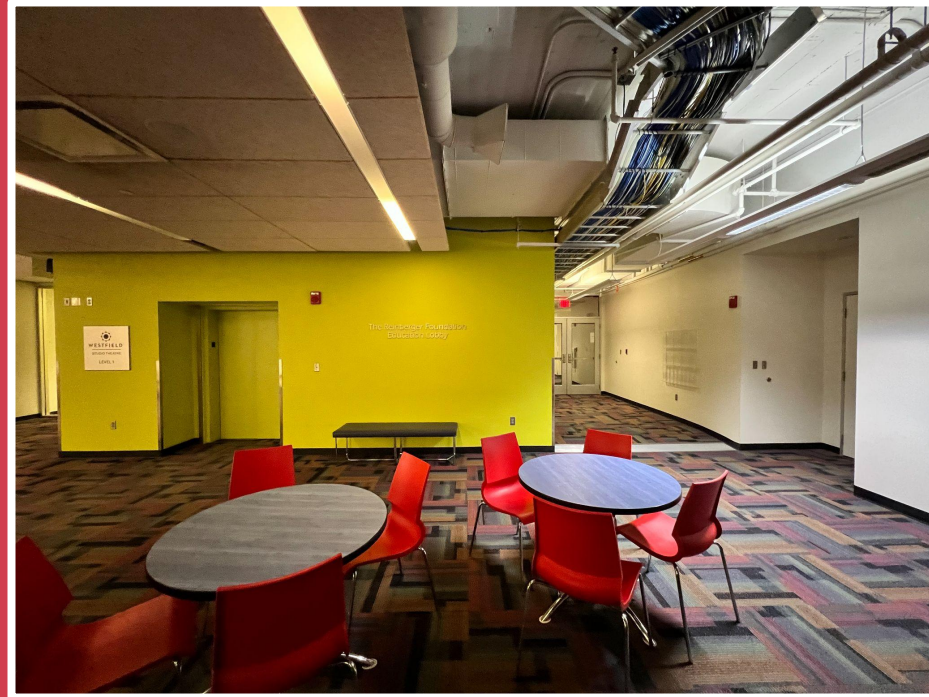
When I leave the Quiet Space, I will see a hallway with pair of glass double doors at the end.



When I walk to the end of the hallway, I will go out the doors.



When I walk through the doors, I will end up in the large room called PB & J Room where I started.



If I have to use the bathroom, I will go to the hallway off of the PB & J Room.



If I get hungry, I can go to the Deli  
that is located right off of the  
restrooms.





When I go inside the Deli, I will see vending machines, a small kitchen, and tables.

